

## **Ballast Water Treatment Retrofit**

SeaBlue provide the optimized solution for retrofit of BWMS base on varies type of ship to address ballast water convention with minimal interruption to operation, which including:

- Project management
- Cost evaluation/feasibility study
- Laser scanning
- Equipment selecting
- Designing of the system

## **SeaBlue Engineering Pte Ltd**

Address: 51 Goldhill Plaza #07-10/11,

Singapore 308900

Phone: +65-92285830

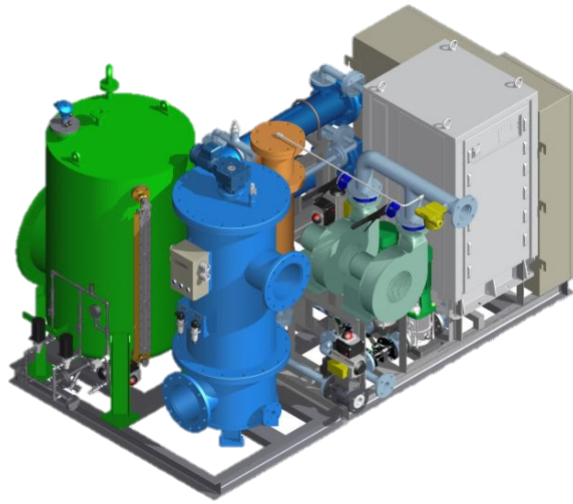
E-mail: [info@seablue.com.sg](mailto:info@seablue.com.sg)



**SEABLUE**

# **SEABLUE ENGINEERING**

## **Ballast Water Treatment Retrofit**



## BACKGROUND

According to IMO ballast water convention, the installation of BWMS have tied with IOPP certificate renewal data, all the sailing ship under ballast water convention required to install the BWMS on or before the IOPP certificate renewal date when this data is failing on or after 08 September 2019. In addition to the BWMC, other national bodies have introduced regulations in response to national concerns. The most influential of these is the United States Coast Guard (USCG).

## PROJECT MANAGEMENT

- Project Management and Cost Control
- Equipment Delivery, Parts Inventory and Placement
- Pre-Fabrication Supervision
- Optimized BWMS Retrofit Timetables
- Installation Oversight with Key Stakeholders
- Equipment Testing Oversight
- Commissioning Oversight

## FEASIBILITY STUDY

- Operational Profile of the Vessel
- Cargo and Ballasting Operations
- Shipping Route Issues That May Affect the BWMS
- Technical Installation Considerations
- Operational Considerations
- Ballast Pumps and Flow Assessment
- Functions, Attributes and Specifications of BWMS
- Space Limitations and Restrictions
- Maintenance

## BASIC AND DETAIL DESIGN

Basic Design Engineering will result in conceptual design for your chosen BWMS installation:

- Collect and Analyze all Engineering Data
- Review Engineering Concepts and BWMS Spacing Specifications, of
- Discuss and Resolve any Issues with the Retrofit Design Model
- Develop Basic Engineering Drawings

Detail design phase can include:

- Refined, Detail Engineering Design and Specifications
- Pre-Fabrication Drawings
- Materials List and Procurement Plans
- Class and Flag Documentation and Approvals
- Pre-Installation Preparations

**We assist you to identify and implement the optimal solution for your vessel without a hidden agenda.**

Please contact us at [Info@seablue.com.sg](mailto:Info@seablue.com.sg) to discuss the possibility that suits you best.

[www.seablue.com.sg](http://www.seablue.com.sg)